

TRADITIONAL: CRAFTSMAN LANDSCAPE DESIGN



Baked Terra Cotta



Bright Gold



Fresh Olive



Cool Mint

The Woodworkers Association concurs, it takes a craftsman to build a craftsman. While you're hand-hammering your copper sink, remember to stop and smell the Magnolia tree and reflect on a time when the hand-made was preferred over the mass-produced. For more garden design ideas, visit: www.landscapingnetwork.com/garden-styles

DECOR



Adirondack



Ceramic Pots



Hammered Copper Fire Pit



Wood Gate

MATERIALS



Wood Siding



Copper Gutters



Bronze Hardware



Cobblestone

PLANT PALETTE



Daylily



Acanthus



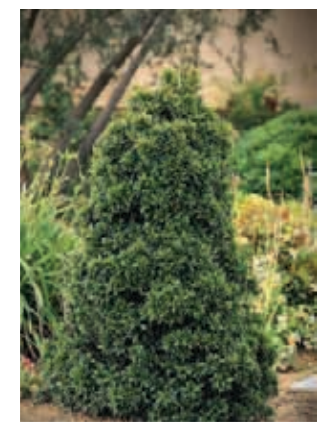
Nandina



Passionflower

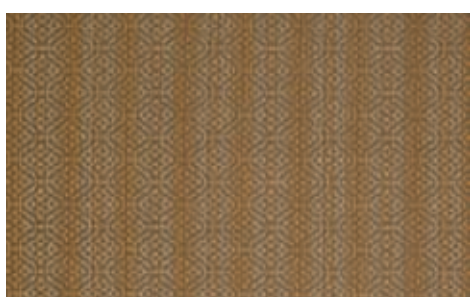


Bergenia



Eugenia

FABRICS



Hendrix Clay



Weston Ginger

VFLANDSCAPE
RESIDENTIAL AND COMMERCIAL SERVICES